

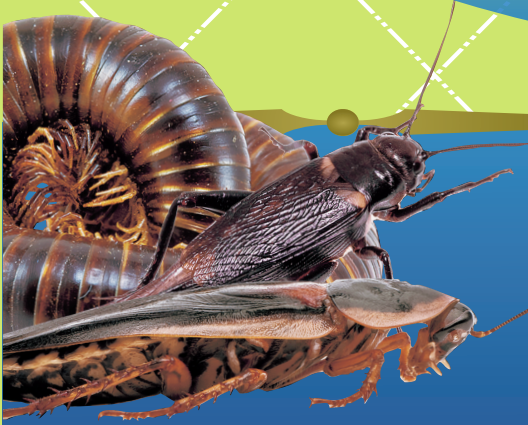
40254

TO OPEN...  
CUT HERE!

RESEALABLE  
ZIPPER  
BAG



Natural  
GUARD<sup>®</sup>  
by Brand  
ferti·lome<sup>®</sup>



# DIATOMACEOUS EARTH

*Effective Crawling Insect Control*

- Effective and Long Lasting When Kept Dry
- Controls Cockroaches, Ants, Earwigs, Crickets, Millipedes, Centipedes, Silverfish, Fleas, Carpet Beetles, Bedbugs, Grasshoppers, Slugs and Other Crawling Insects as Listed
- For Outdoor and Indoor Household Use

ACTIVE INGREDIENTS:	
Diatomaceous Earth, consisting of:	
Silicon Dioxide.....	85%
OTHER INGREDIENTS:.....	15%
TOTAL:.....	100%

KEEP OUT OF REACH OF CHILDREN  
**CAUTION**

SEE BACK PANEL FOR PRECAUTIONARY STATEMENTS.

**NET WEIGHT 4 LBS. (1.81 KG)**

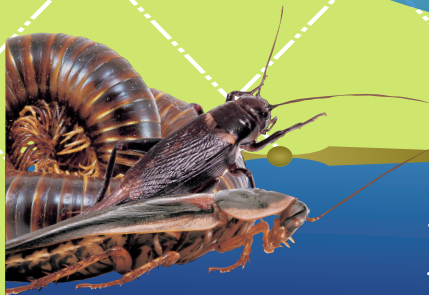




# Natural GUARD<sup>®</sup>

by Brand

## ferti•lome<sup>®</sup>




## DIATOMACEOUS EARTH

*Effective Crawling Insect Control*

### FIRST AID

#### If in eyes

- Hold eye open and rinse slowly and gently with water for 15 – 20 minutes. Remove contact lenses, if present, after the first 5 minutes, then continue rinsing eye.
- Call a poison control center or doctor for treatment advice.

Have the product container or label with you when calling a poison control center or doctor, or going for treatment. In the event of a medical or chemical emergency, contact ChemTel Inc.  North America 1-800-255-3924 or Worldwide Intl. +01-813-248-0585.

Common name of active ingredient: Amorphous Silica, Diatomaceous Earth

### PRECAUTIONARY STATEMENTS HAZARDS TO HUMANS AND DOMESTIC ANIMALS

**CAUTION:** Causes moderate eye irritation. Avoid contact with eyes. Use adequate ventilation and avoid breathing dust. Wear a suitable dust mask approved by NIOSH/MSHA when using this product during prolonged exposure.

### DIRECTIONS FOR USE

It is a violation of Federal Law to use this product in a manner inconsistent with its labeling.

### PRODUCT INFORMATION

This product is a ready-to-use insecticide which provides effective pest control against crawling insects. **Natural Guard<sup>®</sup> Brand by ferti•lome<sup>®</sup> Diatomaceous Earth** is a mechanical insect killer. Insects cannot become immune to its action. Insects come in contact or ingest this powder and die in 48 hours.

This product is for use in and around residential, commercial and agricultural buildings, structures and their immediate surroundings, in and around food/feed handling establishments, in and around livestock and poultry houses and may be applied over the top while animals are present, on crops, and stored grain.

### INDOOR AND OUTDOOR APPLICATIONS

**Natural Guard<sup>®</sup> Brand by ferti•lome<sup>®</sup> Diatomaceous Earth** is intended for application with a hand duster, power duster or as a slurry for application to areas where insects are found.

Apply **Natural Guard<sup>®</sup> Brand by ferti•lome<sup>®</sup> Diatomaceous Earth** to cracks and crevices with the use of a bulbous duster or other suitable equipment. Apply lightly and uniformly. In living areas make application in such a manner as to avoid deposits on exposed surfaces or introducing the material into the air. Treat a small area of the surface to be treated and look for staining or other adverse reactions before making regular application. To apply insecticide directly into cracks and crevices, use a bulbous duster or other suitable equipment. Apply lightly and uniformly to infested areas. The amount of product to be applied will vary with the site but should usually be in the range of 1-5 oz/100 sq. ft.

**Indoor Use: Cockroaches, Ants, Earwigs, Millipedes, Centipedes, Crickets and Silverfish:** Lightly coat a thin layer of **Natural Guard<sup>®</sup> Brand by ferti•lome<sup>®</sup> Diatomaceous Earth** in areas where pests are found and may hide including cracks and crevices, behind and beneath refrigerators, cabinets, stoves, garbage cans and in and around sewer pipes and drains, window frames and in attics and basements. Dust insects directly if possible. Apply no more than once a week.

**For Fleas:** Thoroughly treat floor and bedding in and around pets sleeping quarters. Treat surrounding cracks and crevices, baseboards, carpeting and wherever fleas are suspected.

**For Carpet Beetles:** Dust along baseboards, carpet edges, under carpeting, furniture, in closets and shelving where these insects are seen or suspected.

**Bedbugs:** Dismantle bed. Use **Natural Guard<sup>®</sup> Brand by ferti•lome<sup>®</sup> Diatomaceous Earth** in joints, crevices and where rungs are inserted. See that all interior areas are dusted. Dust mattresses especially folds and edges. All cracks and crevices and around window openings in the bedroom should be treated.

**Outdoor Use: Natural Guard<sup>®</sup> Brand by ferti•lome<sup>®</sup> Diatomaceous Earth** is intended for application with a hand duster, power duster or as a slurry for application to areas where insects are found. **Cockroaches, Earwigs, Grasshoppers, Ants, Crickets, Slugs and Other Crawling Insects:** Lightly coat a thin layer of **Natural Guard<sup>®</sup> Brand by ferti•lome<sup>®</sup> Diatomaceous Earth** in areas where these insects are found such as patios, outdoor sills, window and door frames. Apply around foundations, along ant trails and around sewer pipes and drains. Apply no more than once a week.

### STORAGE AND DISPOSAL

**Storage:** Store in a cool, dry area.

**Pesticide Disposal:** Wastes resulting from the use of this product may be disposed of on site or at an approved waste disposal facility.

**Container Disposal: If empty:** Non-refillable container. Do not reuse this container. Place in trash or offer for recycling if available. **If partly filled:** Call your local solid waste agency for disposal instructions. Never place unused product down any indoor or outdoor drain.

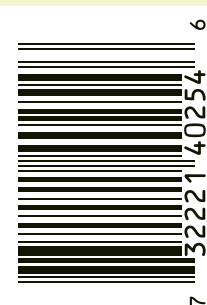
Voluntary Purchasing Groups, Inc. makes no warranty, expressed or implied, regarding the performance of this product in the absence of control over how it is used.

40254-0616-WP

Manufactured By:  
 **Voluntary  
Purchasing  
Groups, Inc.**

230 FM 87 • Bonham, TX 75418  
EPA Reg. No. 7401-449 • EPA Est. No. 7401-TX- 01

Visit Us At: [www.naturalguard.com](http://www.naturalguard.com)  
Product Questions? 855-270-4776



40254